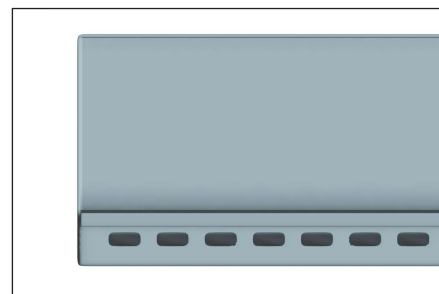
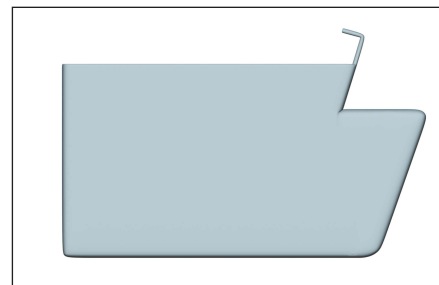


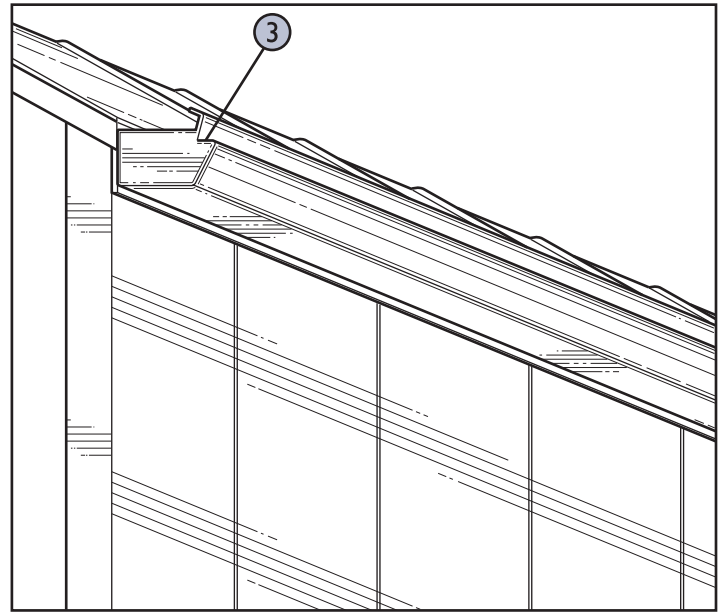
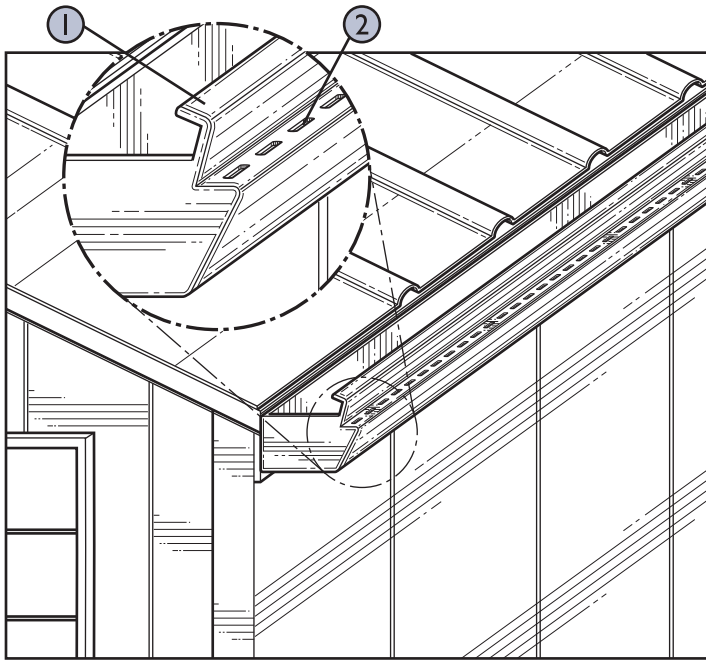
PATENT PENDING

# THE SUPERIOR COMMERCIAL GUTTER SYSTEM

## Prevents Water Overflow Damage to Commercial Buildings

The utility invention of gutter having overflow slots in the front allows for backed up water due to clogged gutter, downspouts or underground drainage a way of escape without causing damage to the building. Residential and commercial gutters with elevated front flanges will drain before entering the building. Gutters with a front flange that is level with the back of the gutter allows for leaf guards to be installed and still drain out the front before entering the building. The overflow slots will bring attention to the building owner or manager that there is a problem with the drainage without having to get on the roof for inspection. The corrugation in the gutter keeps the overflow slots from being visible from lower levels, enhances the gutters strength and is aesthetically pleasing.

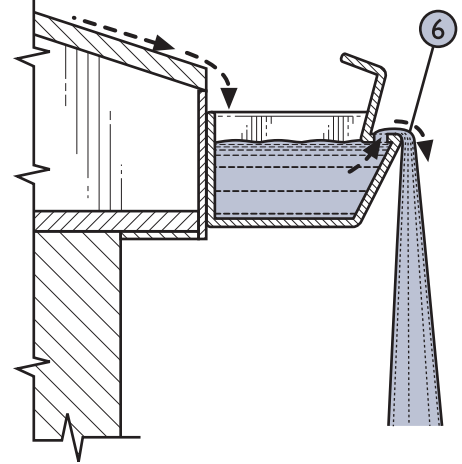
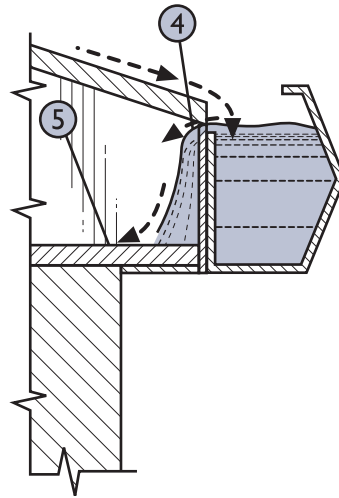




- ① Elevated gutter flange.
- ② Overflow slots allowing escape for backed up water without entering the building.

- ③ Overflow Slots not visible from the ground or lower levels.

- ④ Water flowing over the backside of the gutter into the building.
- ⑤ Interior of the building.
- ⑥ Water flowing out of the front overflow slots instead of entering the building.



- ④ Water flowing over the backside of the gutter into the building.
- ⑤ Interior of the building.
- ⑥ Water flowing out of the front overflow slots instead of entering the building.
- ⑦ Front of the gutter at the same level as the back allowing installation of leafguards.

